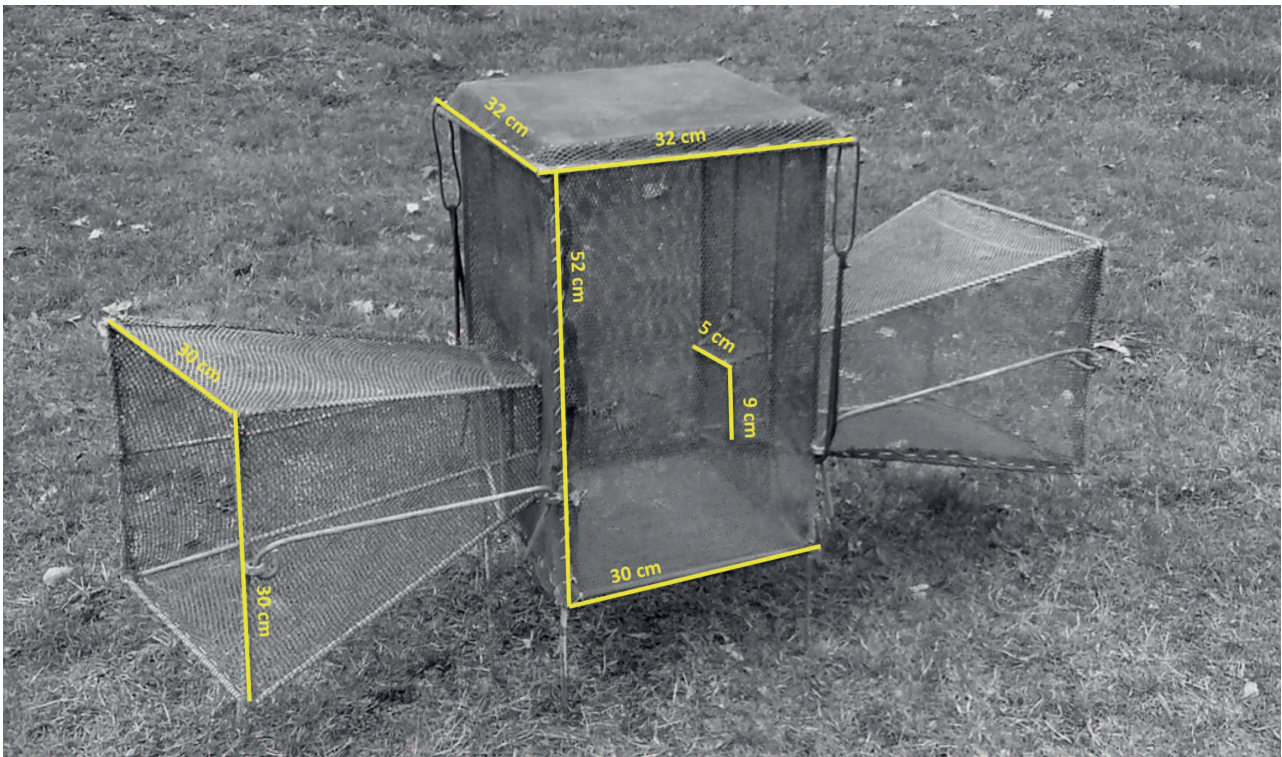




**Supplementary Figure S1.** Image of the study pond viewed from the Eastern shore taken in April 2010.

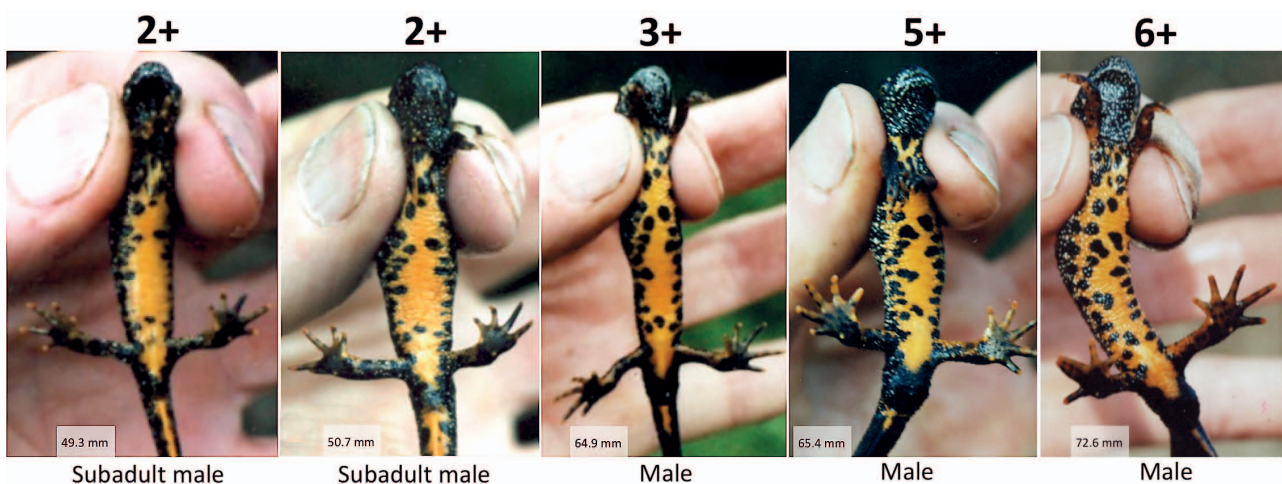


**Supplementary Figure S2.** Example of a robust funnel trap used for capturing amphibians at the study pond from 1998-2016. Note that the trap is stabilised by an iron frame. Traps were manufactured between 1990-2000 by the Biologisches Institut Metelen (see also GLANDT 2000 for further information).



**Supplementary Table S1.** Overview of numbers of individual Northern crested newts *Triturus cristatus* of all age classes registered at the study pond between 1998–2016. Juv = small immature individuals, age class 1+, sub = medium-sized externally sexable immature individuals, age class 2+, F = females, M = males. The number of capture events within a year is also given.

Year	Juv	Sub	F	M	Number of capture events
1998	3	-	59	95	10
1999	3	1	96	84	7
2000	-	8	72	62	14
2001	4	-	51	49	13
2002	-	8	46	70	11
2003	12	1	59	96	7
2004	-	3	45	62	13
2005	5	-	43	56	11
2006	6	4	52	52	8
2007	7	-	43	59	13
2008	-	-	43	55	9
2009	-	8	57	59	9
2010	-	4	69	47	8
2011	-	-	21	19	8
2012	-	-	20	15	15
2013	1	-	8	6	12
2014	-	-	8	9	14
2015	3	-	34	30	12
2016	1	-	15	22	15



**Supplementary Figure S3.** Example of a male *Triturus cristatus* first captured at age 2+ (subadult) and recaptured as a mature male at ages of 3+, 5+ and 6+. Individual SVL is given at the bottom of pictures.